

2022 Renegade Classic Motorhome Customer Prices



Westside Motorcoach
 11201 S. Grant Hwy
 Marengo, IL 60152
 (847)812-2972
 (815)923-0101 Fax

Customer Name:
 Address:
 Phone Number:
 Fax Number:
 E-mail Address:

Renegade Motorhome Standard Features and Options

Qty.	Description	Price	Extension
Chassis Options			
0	Volvo VNL 500HP 1,850 D13 w/ I-Shift, Tandem, LED, EHC, Disc	\$ 209,997	\$ -
0	Volvo VNR 500HP 1,850 D13 w/ I-Shift, Tandem, LED, EHC, Disc	\$ 206,584	\$ -
0	Volvo VNR 500HP 1,850 D13 w/ I-Shift, Single, LED, EHC, Disc	\$ 196,679	\$ -
0	2019 Freightliner Cascadia 505HP DD13, Allison, Tandem, Safety Pkg	\$ 181,856	\$ -
0	P4 Freightliner Cascadia 116 505HP DD13, Allison, Single Axle, Safety Pkg	\$ 200,451	\$ -
0	P4 Freightliner Cascadia 600HP DD16, DT12, Single, Safety Pkg	\$ 197,176	\$ -
0	P4 Freightliner Cascadia 600HP DD16, DT12, Tandem, Safety Pkg	\$ 209,227	\$ -
0	P4 Freightliner Cascadia 600HP DD16, Allison, Tandem, Safety Pkg	\$ 216,378	\$ -
1	Western Star 5700XE 600HP 2,050 D16 w/ DT12, Tandem	\$ 204,400	\$ 204,400
0	2021 Peterbilt 567 605 HP, Ultra-Shift, 1,850 Torque, Tandem Axle	\$ 209,255	\$ -
0	2021 Peterbilt 567 565 HP, Allison, 1,850 Torque, Tandem Axle	\$ 222,809	\$ -
0	2021 Peterbilt 567 605 HP, Ultra-Shift, 1,850 Torque, Single Axle	\$ 199,574	\$ -
0	2021 Peterbilt 567 565 HP, Allison, 1,850 Torque, Single Axle	\$ 212,234	\$ -
0	Single Axle Chassis Shrink/Stretch	\$ 3,150	\$ -
0	Tandem Axle Chassis Shrink/Stretch	\$ 3,850	\$ -
1	Dealer Supplied Chassis (per quote)	\$ 3,500	\$ 3,500
Some Chassis Have Limited Availability			
Conversion Model			
0	37' Mid Bath Mid Entry Motorhome- 37CTS	\$ 240,013	\$ -
0	38' Mid Bath Front Entry Motorhome- 38CSB	\$ 243,664	\$ -
0	40' Mid Bath Front Entry Motorhome- 40CMB	\$ 250,240	\$ -
0	41' Mid Bath Front Entry Motorhome- 41CFM	\$ 256,815	\$ -
0	41' Bath & Half Front Entry Motorhome- 41CRB	\$ 259,844	\$ -
0	41' Mid Bath Front Entry Motorhome- 41CRW	\$ 258,075	\$ -
0	42' Bath & Half Front Entry Motorhome- 42CRB	\$ 262,522	\$ -
0	45' Triple Slide, Front Entry, Two Bath- 45CBF	\$ 283,093	\$ -
0	45' Bath & Half Mid Entry Motorhome- 45CBH	\$ 274,029	\$ -
1	45' Bath & Half Mid-Entry Bunkhouse- 45CBQ	\$ 287,606	\$ 287,606
0	45' Bath & Half Mid Entry Motorhome- 45CMR	\$ 281,756	\$ -
0	45' Bath & 1/2 Mid Entry Motorhome- 45CME	\$ 280,356	\$ -
0	45' Five Slide, Mid Entry, Mid Bath, Rear Closet Slide- 45CRS	\$ 277,215	\$ -
0	45' Mid Bath Mid Entry Motorhome- 45CMB	\$ 278,477	\$ -
0	extra 1' length	\$ 3,500	\$ -
0	Non-Standard Floorplan	\$ 7,000	\$ -
0	Non-Standard Interior Material Selections	\$ 2,100	\$ -

2022 Renegade Classic Motorhome Customer Prices

Qty.	Description	Price	Extension
Exterior Features & Options			
1	Renegade Universal Adjustable Hitch	\$ -	\$ -
1	30,000 Lb. 2-5/16" Ball Hitch- STD Tandem Axle	\$ -	\$ -
1	12,000 lb 2" Tube Hitch- Ltd Tongue Weight (single axle models)	\$ -	\$ -
1	White Side-hinged luggage doors with strut assist- STD	\$ -	\$ -
1	Power Locking Side Swing Baggage Doors - Where Applicable- STD	\$ -	\$ -
1	Electric Trailer Brake Controller w/ Digital Display- STD	\$ -	\$ -
1	Full 7 '6" Interior Height (90")- STD	\$ -	\$ -
1	Undercoating- STD	\$ -	\$ -
1	Third Brake Light- STD	\$ -	\$ -
1	LED Docking Lights- STD	\$ -	\$ -
1	Full Width mud-flap w/ Stainless Steel Renegade logo- STD	\$ -	\$ -
1	Lighted grab handle with Trimark Keyless Entry- STD	\$ -	\$ -
1	4 Point Auto Leveling System w/ App Control- STD	\$ -	\$ -
1	48" Cabover Bunk- STD	\$ -	\$ -
1	Commercial Grade 5/8" FRP Construction- STD	\$ -	\$ -
1	2" x 2" Tube Steel Frame Built on the Chassis- STD	\$ -	\$ -
1	Coach Floor Is a "Super Sandwich" - Galvanized Vapor Barrier over Steel Frame, Studded with 2x4's Screwed to Frame- STD	\$ -	\$ -
1	Insulated with Rigid Foam, then Topped with 3/4 Fir Plywood- STD	\$ -	\$ -
1	2" x 2" Studded Walls and 2" x 3" Ceiling with Rigid Foam Insul.- STD	\$ -	\$ -
1	Side Wall & Roof with R8 Insulation Factor- STD	\$ -	\$ -
1	100% Walk On Roof- STD	\$ -	\$ -
1	Powder Coated Steel Storage Compartments with Felt liner & light- STD	\$ -	\$ -
1	Heavy Duty Electric Double Entrance Step w/Even Stair Tread- STD	\$ -	\$ -
1	26" x 78" Entry Door w/Window, Deadbolt and Screen Door- STD	\$ -	\$ -
1	Porch Light at Entrance Door- STD	\$ -	\$ -
1	Aluminum Wheels with Center Caps, Hub Covers & Nut Covers- STD	\$ -	\$ -
1	D.O.T. Approved LED Marking and Signaling Lights- STD	\$ -	\$ -
1	Mounted Glad Hands- STD	\$ -	\$ -
1	7 Pin Bargeman Plug for Trailer Hookup- STD	\$ -	\$ -
0	30,000 lb. 2-5/16" Tag Hitch (Tandem Axle MH Models) (STD 32'+)	\$ 371	\$ -
0	20,000 lb 2" Hitch- (single axle models)	\$ 371	\$ -
1	20k 2" Square Receiver Tube Insert- Ship Loose	\$ 371	\$ 371
0	20 mil TempCoat- Walls & Ceiling Only- per foot	\$ 112	\$ -
0	20 mil TempCoat- Walls, Ceiling, Floor- per foot	\$ 140	\$ -
1	60" X 96" Larger Bunk Area	\$ 1,610	\$ 1,610
0	Bright Stainless Side Swing Baggage Doors (IPO STD)	\$ 693	\$ -
0	Stainless Steel on Bunk Exterior (Only w/ SS Baggage Doors)	\$ 350	\$ -
0	Spray in Liner in Cargo Boxes	\$ 2,310	\$ -
0	Diamond Shield Anti-Chip Protection- Required on Painted Units	\$ 1,050	\$ -
3	12v LED Scene Light	\$ 322	\$ 966
0	Cab Cutout 29" x 29"	\$ 700	\$ -
1	Underbody LED Lights- Color Changing w/ Controller	\$ 1,330	\$ 1,330
0	Color Changing Led Lights Under the Slideouts	\$ 1,120	\$ -
0	One Storage Box to be 6' Wide w/ (2) Doors	\$ 490	\$ -
0	Insulated Escape Hatch in Cabover bunk	\$ 490	\$ -
4	Additional Clearance Lights	\$ 35	\$ 140
0	Extra Taillights-Configuration #3	\$ 1,680	\$ -
1	Mid-Ship Turn Signals	\$ 105	\$ 105
0	3/4 Rear Pass-Through Storage Compartment (N/A w/ all w/Options)	\$ 770	\$ -
0	Full Walk Thru Aero Cap	\$ 7,000	\$ -

2022 Renegade Classic Motorhome Customer Prices

Qty.	Description	Price	Extension
1	TempCoat Sewage & Water Management Boxes	\$ 735	\$ 735
0	Spray Foam Insulation Walls & Ceiling	\$ 154	\$ -
34	Blue Board Foam Insulation	\$ 41	\$ 1,380
0	Chrome Cargo Box Handles	\$ 420	\$ -
1	12v & 110v Recept. In Storage Box	\$ 140	\$ 140
0	Extra 110v Recept. In Power Cord In Storage Box	\$ 126	\$ -
0	Additional Exterior 110v Receptacle	\$ 168	\$ -
Warranty			
1	One Year Limited Conversion Warranty	\$ -	\$ -
Slide Outs- Per Floorplan			
0	6' Slideout Room by Floorplan	\$ 5,390	\$ -
0	12' Slideout Room by Floorplan	\$ 6,930	\$ -
0	Rear Wardrobe Slide- Standard by Floorplan	\$ 6,930	\$ -
0	Kitchen Slideout Room by Floorplan	\$ 6,930	\$ -
0	Wardrobe Slideout by Floorplan	\$ 6,930	\$ -
0	Bunk & Closet Slideout Ensemble	\$ 9,625	\$ -
0	Bed Slideout by Floorplan (150 Gallon Fresh Water)	\$ 5,810	\$ -
0	15' LQ Slideout Upgrade- Requires Residential Fridge	\$ 1,533	\$ -
0	Upgrade Kitchen slide to 11'	\$ 1,680	\$ -
0	Upgrade C/S Rear Closet to Include Vanity	\$ 1,680	\$ -
Awnings			
0	Carefree w/ Lighted Lead Rail- 18' and less- STD	\$ -	\$ -
0	Carefree Lateral Arm w/ Lighted Lead Rail- 19'-22'	\$ 1,785	\$ -
0	Awning Hardware Color: _____ w/ _____ Fabric	\$ -	\$ -
0	Slide Topper Awning Hardware Color: White w/ Black Fabric	\$ -	\$ -
0	Girard Nova 2 ILO Carefree 18'	\$ 371	\$ -
1	Girard Vision ILO Carefree 18' for Roof Mount (12' 2")	\$ 1,092	\$ 1,092
1	Add Second Girard Awning (19' 8" & 12' 2" Roof Mounted)	\$ 5,551	\$ 5,551
0	(2) Matching Girard Awnings Road Side	\$ 8,008	\$ -
0	Awnings Over Windows (ea.)	\$ 385	\$ -
0	Single Power Awnings Over Window (ea.)	\$ 1,379	\$ -
0	Double Power Awning Over Window (ea.)	\$ 1,813	\$ -
0	ZipDee Century II 2-Stage Awning w/Lighted Lead Rail- Roof Mounted	\$ 12,152	\$ -
0	Roof Mount Awning Can- R/S	\$ 5,593	\$ -
Windows			
0	Bonded Thermopane Windows- STD	\$ -	\$ -
0	United Manual Day/ Manual Night Shades- STD	\$ -	\$ -
0	United Power Night/Manual Day Window Shades	\$ 840	\$ -
1	Skylight Over Shower	\$ 413	\$ 413
0	2 Bunk Windows 12x30 w/ Valances & Shades	\$ 735	\$ -
1	Single Bunk Window 12x30 w/ Valance & Shade	\$ 371	\$ 371
0	Cab Window Tint	\$ 315	\$ -
0	Add 36" x 24" Non-Opening Window w/Valance & Shade	\$ 735	\$ -
0	48" x 24" Non-Opening Window w/Valance & Shade IPO Standard	\$ 6	\$ -
0	48" x 30" Picture Window - at Credenza or Dinette, no OHC	\$ 6	\$ -

2022 Renegade Classic Motorhome Customer Prices

Qty.	Description	Price	Extension
Interiors			
1	Cab / Conversion Divider Privacy Shade- STD	\$ -	\$ -
1	Hardware & Fixture Finish- Brushed Nickel- STD	\$ -	\$ -
1	"Soft Touch" Padded Vinyl Ceiling (White)- STD	\$ -	\$ -
1	Décor Package- _____, _____ Valances	\$ -	\$ -
1	Bedding- STD	\$ -	\$ -
1	Full 90" Interior Height	\$ -	\$ -
1	Large Cab Walk Through w/Flexible Rubber Boot & Privacy Shade- STD	\$ -	\$ -
1	Electric Trailer Brake Controller with Digital Display- STD	\$ -	\$ -
1	Raised 6 Panel Interior Passage Doors- STD	\$ -	\$ -
1	Accent Lighting Throughout with Wall Switches- STD	\$ -	\$ -
1	Décor Maple Valances Around Windows- STD	\$ -	\$ -
1	48" x 95" Bunk Over Cab- STD	\$ -	\$ -
1	Double Bay Stainless Steel Sink in Kitchen with Covers- STD	\$ -	\$ -
1	Solid Maple Mirrored Medicine Cabinet in Bath- STD	\$ -	\$ -
0	Padded Walls w/ Wainscoting- Std Fabric- Per Foot	\$ 84	\$ -
34	Padded Walls w/ Wainscoting- Optional Fabric- Per Foot	\$ 105	\$ 3,570
0	Padded Walls- No Wainscoting- Std Fabric- Per Foot	\$ 84	\$ -
0	Padded Walls- No Wainscoting- Optional Fabric- Per Foot	\$ 105	\$ -
0	Multiplex Control System w/ App Control	\$ 4,193	\$ -
1	Wood Valances- 2015 Classic Style w/ NO Décor Tops	\$ 6	\$ 6
0	Ship Décor Tops Loose	\$ 6	\$ -
0	Infinity Light	\$ 700	\$ -
0	Full Length Mirror (one is standard)	\$ 210	\$ -
0	Cab Privacy Curtain- Rail Type	\$ 315	\$ -
1	Cab / Conversion Divider (Wood Doors)	\$ 1,330	\$ 1,330
0	Entryway Walls all Wood No Padded Walls in this Area	\$ 490	\$ -
2	Ceiling Fan	\$ 210	\$ 420
0	Outlet w/ USB Port in Bunk	\$ 105	\$ -
1	Shelf w/ USB Outlet in Bunk	\$ 175	\$ 175
0	Extra Interior Outlet centered between Sofas	\$ 105	\$ -
0	Door Activated Light in Tall Cabinet	\$ 70	\$ -
1	Extra Coat Hooks on Entry Way Wall	\$ 105	\$ 105
0	Match Slide-Out Ceiling Padded Material to Walls	\$ 175	\$ -
0	Beveled Mirror- N/A all Floor Plans	\$ 560	\$ -
0	Privacy Curtains for Bunk	\$ 420	\$ -
0	Beadboard Wainscoting	\$ 490	\$ -
0	Extra 110v Outlet- Interior	\$ 105	\$ -
0	Bedliner in Stepwell	\$ 315	\$ -
Furniture			
1	UltraLeather Seat Fabric Package- STD	\$ -	\$ -
1	Mini-King (Olympic Queen) Bed 66 x 80 w/ Memory Foam Mattress- STD	\$ -	\$ -
1	Dream Dinette Feature- STD	\$ -	\$ -
1	Bunk Mat- STD	\$ -	\$ -
1	UltraLeather Captains Chairs w/Adjustable Arms in Cab- STD	\$ -	\$ -
0	King Size (72x80) Bed IPO Olympic Queen (N/A All Models)	\$ 700	\$ -
0	Queen Bed 50 x 80 IPO Mini-King	\$ 6	\$ -
0	Free Standing Dinette w/ 4 Chair & Storage Credenza	\$ 1,680	\$ -
0	(2) Recliners Swivel Rocker (Model 283) IPO Sofa	\$ 1,253	\$ -
0	Theater Seating- Motorized IPO Sofa	\$ 1,253	\$ -
0	Hide-a-Bed Sofa ILO Easy Bed	\$ 833	\$ -

2022 Renegade Classic Motorhome Customer Prices

Qty.	Description	Price	Extension
0	Hide-a-Bed Sofa	\$ 2,100	\$ -
0	Ottoman w/Storage	\$ 420	\$ -
0	(2) Villa Euro Recliners IPO Sofa	\$ 1,120	\$ -
0	Re-Cover Factory Cab Seats	\$ 6	\$ -
1	Use Factory Cab Seats- Do Not Re-Cover	\$ 6	\$ 6
0	Villa Euro Recliner	\$ 1,330	\$ -
0	(2) Villa Euro Recliners ILO Easy Bed	\$ 1,610	\$ -
0	Flexsteel Sleeper Dinette w/ Cushion	\$ 210	\$ -
0	Solid Surface Table w/Flush Mounted Holders	\$ 490	\$ -
0	Beveled Mirror on Wall	\$ 560	\$ -
0	Fireplace in Cabinet	\$ 553	\$ -
	Cabinets & Stain	\$ -	\$ -
1	Maple Cabinets- STD	\$ -	\$ -
1	Dove Tailed Drawers- STD	\$ -	\$ -
1	Stacked Silverware Drawer- STD	\$ -	\$ -
1	Maple Framed Mirror in Hallway or Bedroom (varies by model)- STD	\$ -	\$ -
1	Glass Control Panel Cover- STD	\$ -	\$ -
1	Pull-Out Pantry- STD	\$ -	\$ -
1	Self Closing Drawer Slides- STD	\$ -	\$ -
1	Residential Style Finish Drawers- STD	\$ -	\$ -
1	Optional Motorhome Cabinet Stain	\$ 1,575	\$ 1,575
1	Epic Slab Style Cabinet Doors	\$ 833	\$ 833
0	HG905S Cabinet Finish (Includes Wainscoting)	\$ 7,350	\$ -
0	HG905S Cabinet Finish (No Wainscoting)	\$ 5,950	\$ -
0	Upgrade Cherry Cabinets: Natural	\$ 9,450	\$ -
1	Cabinet in the Bunk	\$ 770	\$ 770
0	Optional Cabinet Door Design	\$ 1,484	\$ -
0	Upgrade Select Hickory Cabinets: Natural	\$ 9,975	\$ -
0	Slide Out Kitchen Base	\$ 1,190	\$ -
1	Tall Item Drawer Under Cooktop	\$ 210	\$ 210
0	Small Item Drawer Under Cooktop	\$ 210	\$ -
0	Screen Mesh IPO Glass in A/V Cabinet	\$ 6	\$ -
0	Glass Door on Cabinet	\$ 70	\$ -
1	Add Drawers to Bathroom Vanity	\$ 420	\$ 420
	Paint	\$ -	\$ -
0	Full Body Paint- Four Colors	\$ 28,000	\$ -
0	Paint Roof Mounted Awning	\$ 840	\$ -
0	Paint Awning and RS Profile	\$ 1,260	\$ -
0	Paint Awnings and Roof Rail	\$ 4,060	\$ -
0	Paint Full Walk Thru Aero Cap and Transitions	\$ 2,555	\$ -
	Flooring	\$ -	\$ -
1	Carpeted Floor Mats (2) in Cab & Runner for Living Area- STD	\$ -	\$ -
1	Matching Carpet in Cab & Living Area- STD	\$ -	\$ -
1	Vinyl floor in living room, galley, hallway and bath areas, carpet in bedroom	\$ -	\$ -
34	Porcelain Tile (per foot)	\$ 175	\$ 5,950
0	Polished Porcelain Tile (per foot)	\$ 210	\$ -
0	Heated Tile, Per Lineal Foot	\$ 175	\$ -
0	Tiled Wainscoting in Bathroom	\$ 490	\$ -

2022 Renegade Classic Motorhome Customer Prices

Qty.	Description	Price	Extension
0	Granite Flooring (per foot)	\$ 245	\$ -
0	Extra Carpet Runner	\$ 35	\$ -
	Countertops: Solid Surface	\$ -	\$ -
1	High Polished Solid Surface countertops- STD	\$ -	\$ -
1	Decorative tile backsplash in all galley areas- STD	\$ -	\$ -
0	Color Changing LED Light- Counter top Edges & Toe Kicks	\$ 973	\$ -
0	Granite Countertops (PER QUOTE)	\$ 8,393	\$ -
0	Corian Countertops Upgrade- Non-Standard Material Charge Applies	\$ 1,953	\$ -
0	Quartz Countertops Upgrade- Non-Standard Material Charge Applies	\$ 8,393	\$ -
0	Bright Stainless Backsplash	\$ 490	\$ -
	Appliances	\$ -	\$ -
1	Samsung Stainless Steel OTR Convection Microwave- STD	\$ -	\$ -
1	Samsung 18 cu ft Residential French Door Refer w/ Ice- STD	\$ -	\$ -
1	Recessed SS LP Cooktop w/ Removable Solid Surface Covers- STD	\$ -	\$ -
1	Outside Refrigerator Prep- 12V/110V wiring only, no slide tray- STD	\$ -	\$ -
0	13 cu ft Elite 4 door RV Refrigerator w/ Ice & Water	\$ 2,163	\$ -
0	13 cu ft Elite 4 door RV Refrigerator NO Ice & Water	\$ 1,743	\$ -
0	Outside Refrigerator/Freezer on Slide Tray	\$ 2,240	\$ -
0	3 Burner w/ Oven SS (NA on all Models)	\$ 434	\$ -
1	2 Burner Induction Electric Cooktop	\$ 833	\$ 833
0	Washer & Dryer- Combo Unit	\$ 2,170	\$ -
0	Washer & Dryer- Stack	\$ 2,170	\$ -
1	Central Vacuum System- Basement Mounted	\$ 455	\$ 455
0	LP Quick Disconnect C/S	\$ 273	\$ -
0	Weber 110v Electric Grille on Slide Tray	\$ 1,190	\$ -
0	2 Burner Electric Cooktop (w/o Knobs)	\$ 1,190	\$ -
0	Recessed Gas Cooktop (Corian only)	\$ 455	\$ -
0	Dyson V6 Vacuum System	\$ 651	\$ -
0	Dishwasher Drawer	\$ 1,393	\$ -
	Water Systems		
1	Toilet- Macerator- Bone Color (Electric Flush)- STD	\$ -	\$ -
1	150 Gallon Fresh Water Tank- STD	\$ -	\$ -
1	Single Lever Kitchen Faucet w/ Retractable Sprayer- STD	\$ -	\$ -
1	Waste Tank Flush- STD	\$ -	\$ -
1	Outside Spigot by Holding Tanks- STD	\$ -	\$ -
1	Water Management Bay- STD	\$ -	\$ -
1	(2) 75 Galon Holding Tanks- STD	\$ -	\$ -
1	(2) Holding Tank Heat Strips per Tank- STD	\$ -	\$ -
1	Variable Flow Water Pump- STD	\$ -	\$ -
1	Whole House Water Filter- STD	\$ -	\$ -
1	Double Bowl SS Kitchen Sink w/ Covers- STD	\$ -	\$ -
1	10 Gallon LP/110V Water Heater- STD	\$ -	\$ -
1	One-Piece Fiberglass Shower- STD	\$ -	\$ -
1	Glass Shower Door- STD	\$ -	\$ -
0	Outside Spigot (one is standard)	\$ 210	\$ -
0	Flo-Jet Macerator Sewage System	\$ 833	\$ -
0	Solid Surface Shower w/ Accent	\$ 5,040	\$ -
0	Extra Holding Tank- (Limited Availability)	\$ 490	\$ -
0	Black Macerator Ceramic Toilet ILO Bone	\$ 490	\$ -

2022 Renegade Classic Motorhome Customer Prices

Qty.	Description	Price	Extension
2	Solid Surface Bath Sink ILO Standard	\$ 252	\$ 504
1	Single Bowl SS Kitchen Sink ILO Double Bowl	\$ 6	\$ 6
0	Truma Aquago Tankless Water Heater	\$ 952	\$ -
0	Girard Tankless Water Heater	\$ 210	\$ -
0	Power Fresh Water Hose Reel	\$ 553	\$ -
0	Outside Shower	\$ 245	\$ -
0	Spray Away Outside Hose	\$ 154	\$ -
0	2nd Lav Sink	\$ 315	\$ -
0	Bigger Bathroom w/ Two Sinks	\$ 1,680	\$ -
0	Convert Half Bath to Full Bath	\$ 1,260	\$ -
0	Add Second Full Bath to Single Bath Floorplan (Includes: Shower, Macerator Toilet, Lav, Cabinets, Vountertop)	\$ 5,453	\$ -
0	Add Half Bath to Single Bath Floorplan (Includes: Toilet, Lav, Cabinets, Vountertop)	\$ 4,193	\$ -
0	Extra 100 Gallon Fresh water tank w/variable flow pump in Storage box	\$ 1,050	\$ -
	Mechanical Systems	\$ -	\$ -
2	8-D AGM Batteries- (2 STD)	\$ -	\$ -
1	Surge Guard Protector w/ Monitor Panel- STD	\$ -	\$ -
1	Magnum 3000 Watt Hybrid Inverter w/ AGS- STD	\$ -	\$ -
1	Power Vent (2) w/ One Remote- STD	\$ -	\$ -
1	Pre-wire for up to 3 solar panels, 175 watts each- STD	\$ -	\$ -
1	Power Retractable Shore Cord Reel-STD	\$ -	\$ -
3	15,000BTU Roof A/C with Heat Pumps (2ea 40' & under)- STD	\$ -	\$ -
1	35,000 BTU Furnace w/Electronic Ignition- STD	\$ -	\$ -
1	Digital Wall Mounted Thermostat for Heating & Cooling- STD	\$ -	\$ -
1	24.2gal LP Tank with Regulators & Gauge- STD	\$ -	\$ -
1	12.5 kW Onan Quiet Diesel Generator- STD over 40'	\$ -	\$ -
1	8 kW Onan Quiet Diesel Generator- Coaches 40' & Under- STD	\$ -	\$ -
1	Generator Switch in Living Quarters & Bedroom	\$ -	\$ -
1	Automatic Power Transfer Switch- STD	\$ -	\$ -
1	Monitor System: LP, Batteries, Wtr & Hldng Tnks- STD	\$ -	\$ -
1	GFCI and Standard Receptacles Throughout- STD	\$ -	\$ -
1	14" x 14" Remote Control Power Vent Fan in Bath & Living Quarters-STD	\$ -	\$ -
1	Fire Extinguisher; Carbon Monoxide, LP Gas & Smoke Detectors- STD	\$ -	\$ -
1	Solar Panel System- (3) 175 Watt Panels w/ Monitor	\$ 1,890	\$ 1,890
0	Lithium Battery Upgrade Package- (6) 100 Amp Hour Battle Born Batteries, Battery Monitor, Battery Heaters, Battery Isolation Manager, Battery Guard Auto-Select	\$ 9,184	\$ -
2	Additional 8D Battery	\$ 1,050	\$ 2,100
0	Additional Vent Fan Remote	\$ 35	\$ -
1	Power Vent (2 Standard) w/ 1 Remote	\$ 413	\$ 413
0	Larger LP Tank (50 Gallon)	\$ 455	\$ -
0	Remote LP between Frame Rails- 38 Gallons (very limited models)	\$ 1,050	\$ -
1	AquaHot 450 Hydronic Heat and Hot Water w/ Engine PreHeat Includes One Water Management Box/ Sewage Bay Heater	\$ 9,793	\$ 9,793
0	Upgrade to Aquahot 600 Series	\$ 4,053	\$ -
0	Fill with Propane	\$ 245	\$ -
0	12.5 kW Onan Quiet Diesel Generator- Coaches Under 40'	\$ 3,661	\$ -
0	Gen-Turi Exhaust	\$ 406	\$ -
0	Extra Magnum 3000 Watt Hybrid Inverter- Wired to Center A/C	\$ 3,213	\$ -
0	110v Marine Grade Heater in Sewage/Water Management Bay	\$ 420	\$ -
1	Extra Generator Switch in Cab (N/A w/ Multiplex)	\$ 175	\$ 175

2022 Renegade Classic Motorhome Customer Prices

Qty.	Description	Price	Extension
0	Extra Air Conditioner in Motorhome (Third)	\$ 1,484	\$ -
0	Mount Hydraulic Jack Controls on Entry Wall	\$ 70	\$ -
3	Deluxe Tinted MaxxAir Roof Vents ILO Standard– Allows Vent to be open when Driving	\$ 105	\$ 315

Electronics

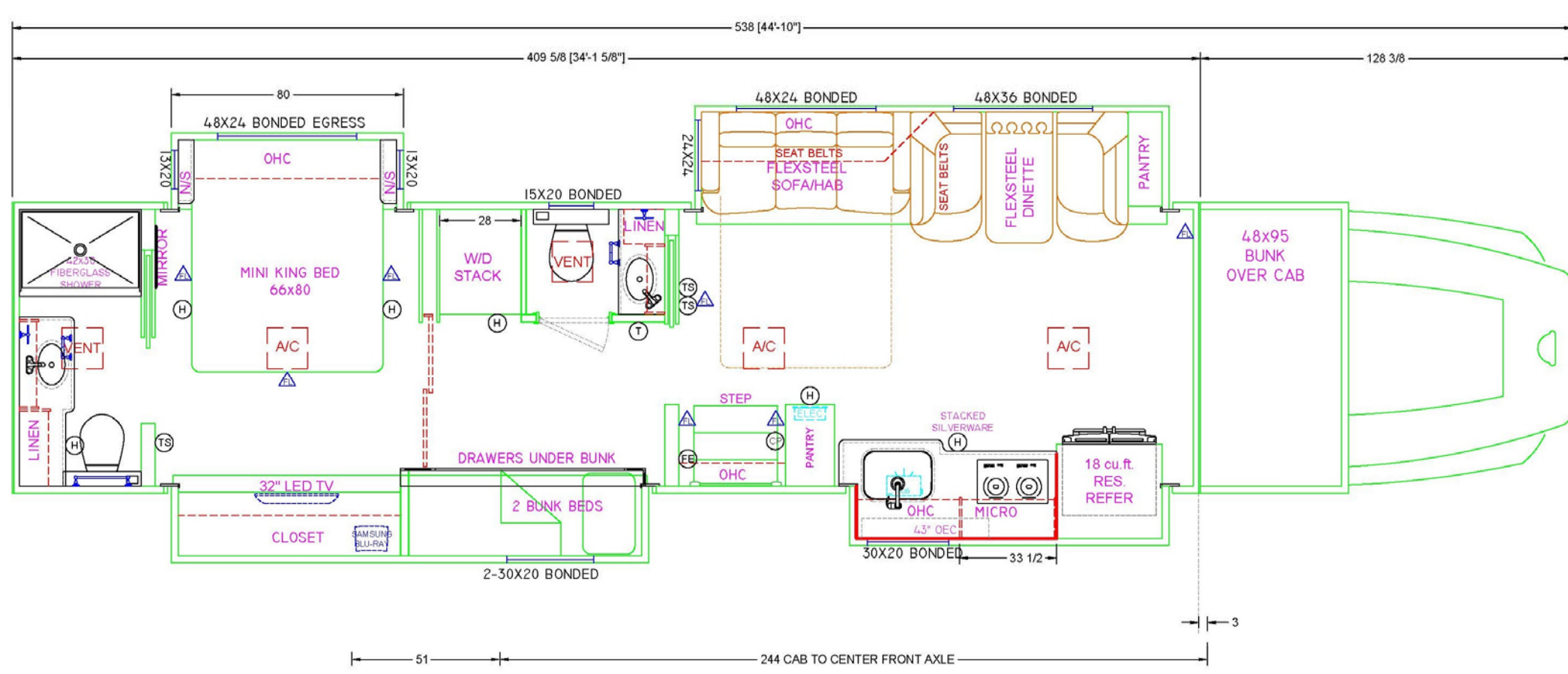
1	Samsung Blu-Ray Player in Living Room- STD	\$ -	\$ -
1	Samsung Blu-Ray Player in Bedroom- STD	\$ -	\$ -
1	360 Degree UHF/VHF TV Antenna w/ Power Amp- STD	\$ -	\$ -
1	6.1" Screen Sat Ready Radio, GPS w/ RV Maps- STD Freightliner Only- (N/A All Chassis)	\$ -	\$ -
1	Side Bullet Cameras- STD	\$ -	\$ -
1	Back-Up Camera w/ Trailer Plug-STD (Run Through Radio- Freightliner)	\$ -	\$ -
1	Winegard Mission RT4035T In-Motion Satellite Dish- STD (Receivers not included)	\$ -	\$ -
1	Pre-Wire for Stationary HD Satellite System- STD	\$ -	\$ -
1	Samsung Soundbar w/ Bluetooth & Wireless Subwoofer- STD	\$ -	\$ -
1	Winegard Connect 4G2 WiFi & 4G LTE Range Extender- STD	\$ -	\$ -
1	Back-Up Monitor & Camera (Truck Only) STD	\$ -	\$ -
1	Cable TV Hook-Up- STD	\$ -	\$ -
2	40/43" LED Smart TV in Place of Standard 32" LCD	\$ 693	\$ 1,386
0	Samsung 4K 50" LED TV Upgrade from Standard 32" LCD	\$ 1,253	\$ -
1	In-Wall Outside Entertainment Center: 43" LED TV w/ Soundbar	\$ 2,653	\$ 2,653
0	Trav'ler SWM3 HD Stationary ILO In-Motion Satellite Dish- No Receivers	\$ 1,120	\$ -
0	Trav'ler SWM3 HD Stationary & In-Motion Satellite Dish- No Receivers	\$ 3,493	\$ -
0	Wilson WeBoost Cell Signal Booster	\$ 1,008	\$ -
0	Flip Down 19" LCD TV w/ DVD in Bunk	\$ 910	\$ -
1	Manual TV Slide (Bunk)	\$ 420	\$ 420
0	Powered Slide for TV at Bunk	\$ 700	\$ -
0	(2) Outside Speakers & AM/FM/CD Player in Storage Comp.	\$ 630	\$ -
1	Swing Arm on Slide for TV	\$ 175	\$ 175
0	Cobra CB Radio	\$ 420	\$ -
0	Cobra Handheld CB Radio	\$ 245	\$ -
0	Back-Up Upgrade to 4 Camera System	\$ 1,421	\$ -
0	50" LED TV with a Lift Behind Sofa	\$ 2,653	\$ -
0	Lift for TV	\$ 1,953	\$ -
0	Do Not Run Camera thru GPS- Use Voyager Monitor	\$ 210	\$ -
0	Extra Camera for Monitor	\$ 490	\$ -
Misc., Custom & Dealer Installed Options			
0	Retail Factory Pick-up (M-Th before 1pm)	\$ -	\$ -
0		\$ -	\$ -
0		\$ -	\$ -
0		\$ -	\$ -
0		\$ -	\$ -
0		\$ -	\$ -
0		\$ -	\$ -
0		\$ -	\$ -
	MSRP	\$ -	\$ 546,197
Call for Discounted Selling Price		\$ -	\$ -

2022 Renegade Classic Motorhome Customer Prices

Color Selections:

Cab Seating- UL Stormy
Sofa- UL Stormy
Dinette- UL Stormy
Carpet- Rock Garden
Décor- Titanium
Tile Flooring- Breccia Silver
Floor Tile Grout- Silver
Padded Walls- Ander Natural
Countertops- Solid Surface- Ocean View
Vanity Sink- Solid Surface- Ocean View
Kitchen Backsplash- Bayview Octogan
Kitchen Backsplash- Grout-
Kitchen Sink- Stainless Steel
Cabinets & Trim- Standard Maple- Burnished Sable
Shower- Riverstone
Ceiling- White
Toilet- Bone
Interior Hardware Color: Satin Nickel
Awning Hardware- Black w/ Black Fabric
Slide Topper Awning Hardware- White w/ Black Fabric
Ceiling Fan- White Base/White Blades

45 CBQ



Renegade
RV
REV GROUP
Confidence to go anywhere



CLASSIC 2021

EXTREME LUXURY | EXTREME PURPOSE | EXTREME DURABILITY





Renegade CLASSIC

The Renegade Classic lets you define your journey on your terms. The ultimate motorcoach is built to your specifications, providing you the versatility to choose from multiple different floorplans, colors, paint schemes, upgraded insulation, chassis options, and more. Your adventures are just beginning with the Renegade Classic motorhome.



Featured to the left:

Shown here is the Classic 38CSB with Woodstock cabinetry featuring Epic style doors and optional hardwood valances. The optional honed tile floor and the standard spacious fiberglass shower give this Classic a warm touch. This Classic bedroom design in this plan allows for a rear window to open up the interior and the 7' 6" ceiling allows for the optional ceiling fan – a favorite among Classic owners.

THE *Renegade* CLASSIC AT A GLANCE

Exterior height **13'5"**
Exterior width **100¹/₄"**
Exterior length **37' - 45'**

Interior height **90"**
Interior width **95"**
Fuel capacity **120 Gallons**

Fresh water capacity **150 Gallons**
Grey water capacity **75 Gallons**
Black water capacity **75 Gallons**

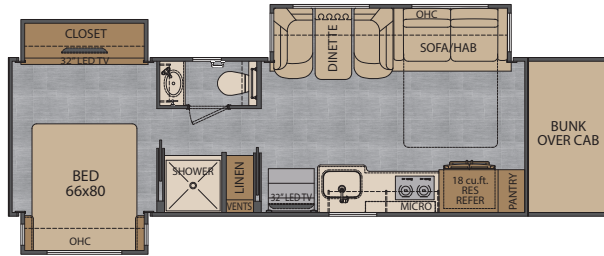


KEY FEATURES

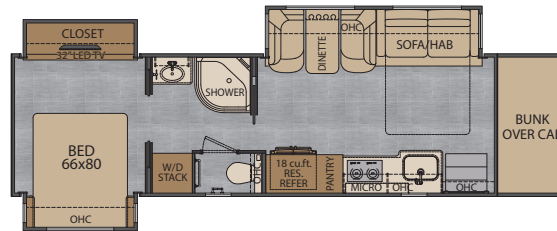
- 500-605 HP with several transmission options
- Optional multiplex system with color touch panel & Bluetooth app control
- Solid hardwood cabinets
- AquaHot 450 system
- Multiple chassis choices
- 15 standard floorplan options
- Up to 30,000 lbs towing capacity
- Multiple insulation choices available

Renegade CLASSIC

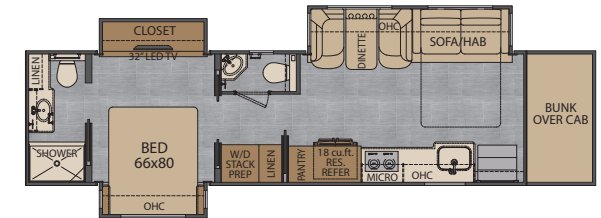
FLOOR PLAN OPTIONS



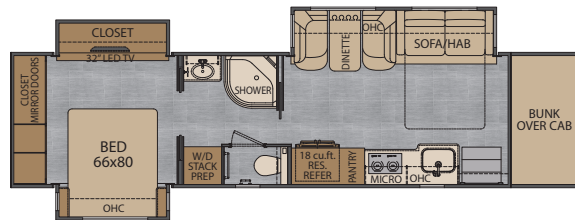
37CTS 37' mid bath, 3 slides



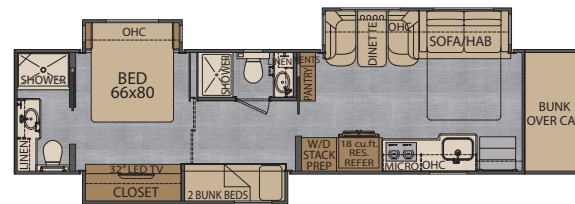
38CSB 38' mid bath, 3 slides



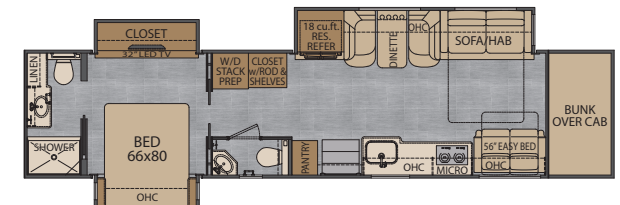
41CRB 41' mid and rear bath, 3 slides



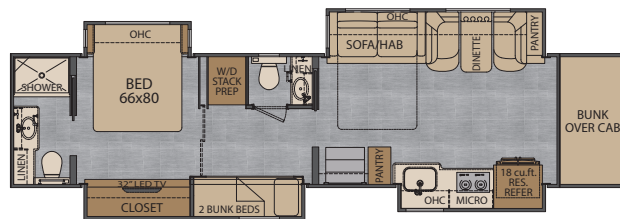
41CRW 41' mid bath, 3 slides



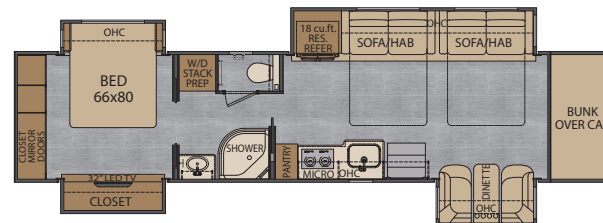
45CBF 45' mid and rear bath, 3 slides



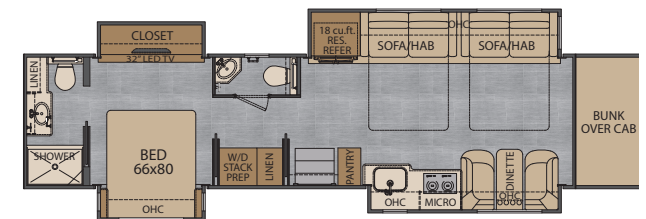
45CBH 45' mid and rear bath, 3 slides



45CBQ 45' mid and rear bath, 4 slides

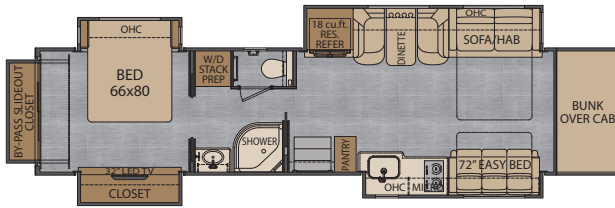


45CMB 45' mid bath, 4 slides

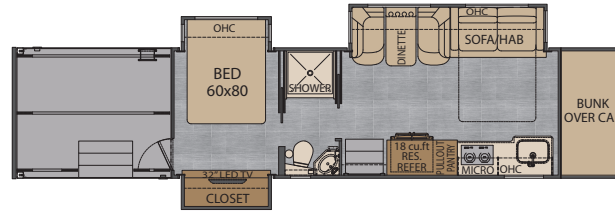


45CMR 45' mid and rear bath, 4 slides

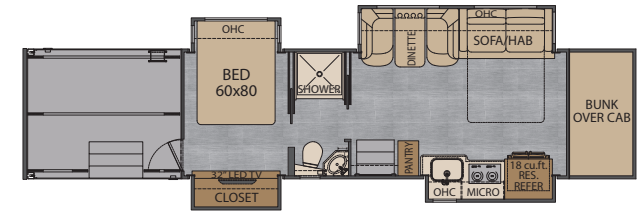
Renegade CLASSIC // FLOOR PLAN OPTIONS



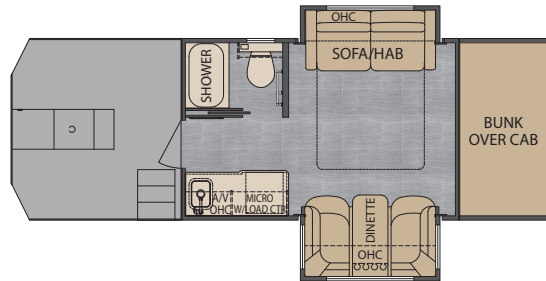
45CRS 45' mid bath, 5 slides



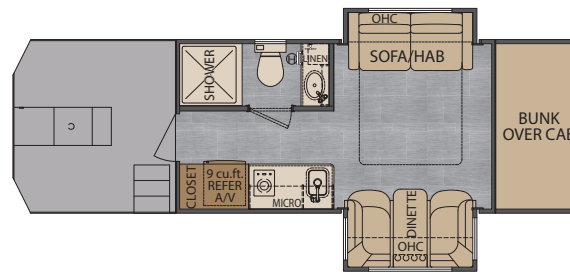
2509 Mid bath, 3 slides



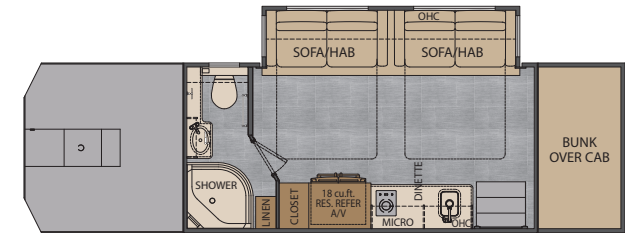
2509GS Mid bath, 3 slides



CS120 Bath, 2 slides



CS150 Bath, 2 slides



DL170 Rear bath, 1 slide

Renegade CLASSIC // INTERIOR DÉCOR OPTIONS



TITANIUM



WARM JAVA



HARVEST SUNSET



WATERFALL

Renegade CLASSIC



STANDARD AND OPTIONAL FEATURES

CAB/CHASSIS

Freightliner Cascadia, Volvo VNR/VNL, or Peterbilt 567 chassis with product specific engine and transmission options and specifications
Polished aluminum wheels with center caps
Air ride rear suspension system
All wheel air disc brakes with ABS
3 stage engine compression brake
Air ride driver and passenger seats with heat, adjustable armrests, and recliners
Power windows and door locks
Electronic cruise control
Power/heated remote control mirrors
Tilt and telescoping steering wheel
Premium sound and thermal insulation package
Removable automotive cab floor liner w/matching floor mats
Flip forward hood assembly for fast & easy service access

CONSTRUCTION

5/8" FRP roof and exterior walls (2 3/8" total wall thickness), insulation and interior wallboard
"Super Sandwich" floor construction w/ galvanized vapor barrier includes:

- 3/4" fir plywood deck over 2 x 4 wood-framed residential floor
- 2" welded steel floor joist system
- Mounted to 6" steel longitudinal floor beams
- 3.5" premium grade sound deadening and thermal insulation in Floor

ELECTRICAL SYSTEMS

12.5KW Onan quiet diesel generator (coaches 40' and over)
8KW Onan quiet diesel generator (coaches under 40')
3000 watt hybrid inverter
8D AGM house batteries
Automatic generator start system
Solar charging system pre-wire
Central command center cabinet
50 amp electrical panel
12V holding tank heaters, grey & black tanks
GFI receptacle and circuit in baggage compartment
Dual 12V dash outlets
Power retract 50 amp power cord reel
Inverted 110V and USB outlets

EXTERIOR

Powder-coated steel storage compartments
Side-hinged baggage doors w/ strut assist & black paddle latches
Keyless entry door touchpad lock & remote locking/unlocking baggage doors
Radius RV entrance door w/screen and deadbolt
Lateral arm awning with electric lights
Aluminum wrapped auto deploy/retract awnings over all slide outs
Frameless dual pane tinted windows with tilt-opening
20,000 lb. hitch, 7 way tow connector w/ 3" insert (single axle)
30,000 lb. hitch, 7 way tow connector w/ 2 5/16" insert (tandem axle)
Equalizer fully automatic 4 point hydraulic leveling system
FRP cabover front w/48" cab bunk
Fiberglass molded tank covers & entry steps (Freightliner & Volvo only)
Full box undercoating

INTERIOR

Ultraleather seating fabric
Williamsburg sofa w/ queen hide-a-bed sleeper
Vinyl flooring throughout
Soft close full extension ball bearing drawer guides throughout
Pull-out style pantry (per floorplan)
Polished solid surface countertops
Stainless steel kitchen sink with removable polished solid surface covers (choice of single or double bowl style)
Tile galley backsplash
Satin nickel single handle kitchen faucet with pull-out sprayer
Hardwood slide-out box trim moldings and corner blocks
Hardwood window valances w/fabric accents
Designer comforter w/ pillows and shams
Bedroom nightstands with solid surface tops (per floorplan)
iRelax memory foam mattress
Wood-framed full length wall mirror in bedroom
Wardrobe with dresser drawers
Dovetail drawer construction

BATH

Color coordinated fiberglass shower with glass door
12V high capacity on demand water pump variable flow
Polished solid surface countertop with stainless steel sinks
Satin nickel bath faucet & adjustable shower head
Porcelain macerator toilet w/push button

APPLIANCES

18 cu. ft. french door residential refer w/ stainless steel doors
Recessed 3-burner gas cooktop w/solid surface cover
Stainless steel convection microwave oven
24.2 gal propane tank w/ regulator and gauge
10 gallon 110 volt/propane water heater
(2 or 3) 15,000 BTU low profile roof A/C w/heat pumps & chill
Grill-ducted (varies by floorplan and gen size)
35,000 btu SFQ series propane furnace
Pre-wired & plumbed for optional washer/dryer (N/A 37CTS)

ENTERTAINMENT SYSTEM

Premium touch screen dash radio with bluetooth & integrated color monitor (chassis specific)
Cab sound system upgrade - speakers, amp, and subwoofer (Cascadia only)
Color rear and side view cameras
Integrated GPS with RV navigation maps (N/A all chassis)
Soundbar home theater w/ subwoofer and bluRay in living room and bedroom
Samsung 32" LED 4K HDTV bedroom & living area
Winegard Mission RT4035T In-Motion satellite dish
Prewire for Trav'ler stationary HD satellite system
Winegard connect 2.0 rooftop OTA antenna w/WiFi and 4G ready*
*(Requires customer subscription)
*(Satellite control box(s) not included)

POPULAR OPTIONS

Underbody LED lighting
Interior under counter & toe kick LED lighting
Exterior 12v scene lighting-bright LED
High gloss 90 sheen finish on cabinets
Aero Cap w/ fixed bunk or walkthrough features
Exterior refer/freezer on slide tray (floorplan specific)
Steel storage compartments with bed-liner
Custom coach paint
Various awning options from Girard and ZipDee
Outside entertainment center w 32" TV or upgrade 43" TV
Powered theatre seats
Polished/honed porcelain tile ILO Vinyl flooring
Heated floors
2 burner induction cooktop ILO gas cooktop
Washer/Dryer Stack or Combo
Manual or motorized TV slide at bunk
AquaHot 450 system

RENEGADE WARRANTY

Renegade MY 2021 motorhomes are covered by a 1-year unlimited miles limited warranty, plus a 3-year 36,000-mile limited structural warranty.

All Renegade motorhome chassis, engines and transmissions, and drivetrain warranties are provided and administered by their respective manufacturers. For specific information about these warranties, ask your dealer or contact Renegade RV.



Renegade
RV
REVGROUP

Confidence to go anywhere

52216 SR 15 Bristol, IN 46507
888.522.1126 | RenegadeRV.com

Features and options may vary from descriptions without notice.

